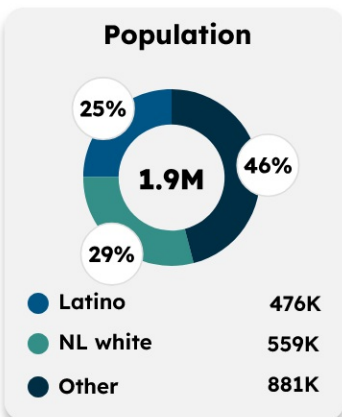


EXTREME HEAT

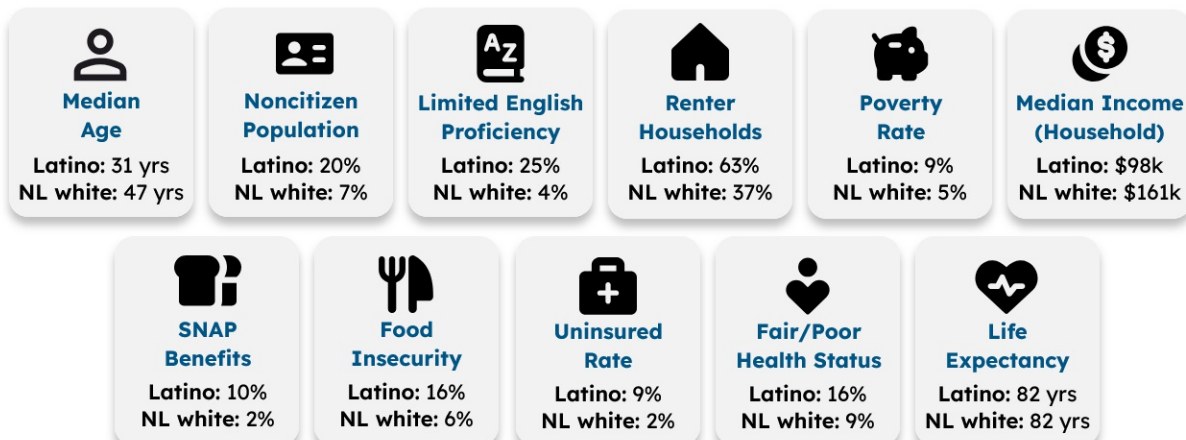
Santa Clara County

County Statistics

Factors Influencing Exposure to Extreme Heat



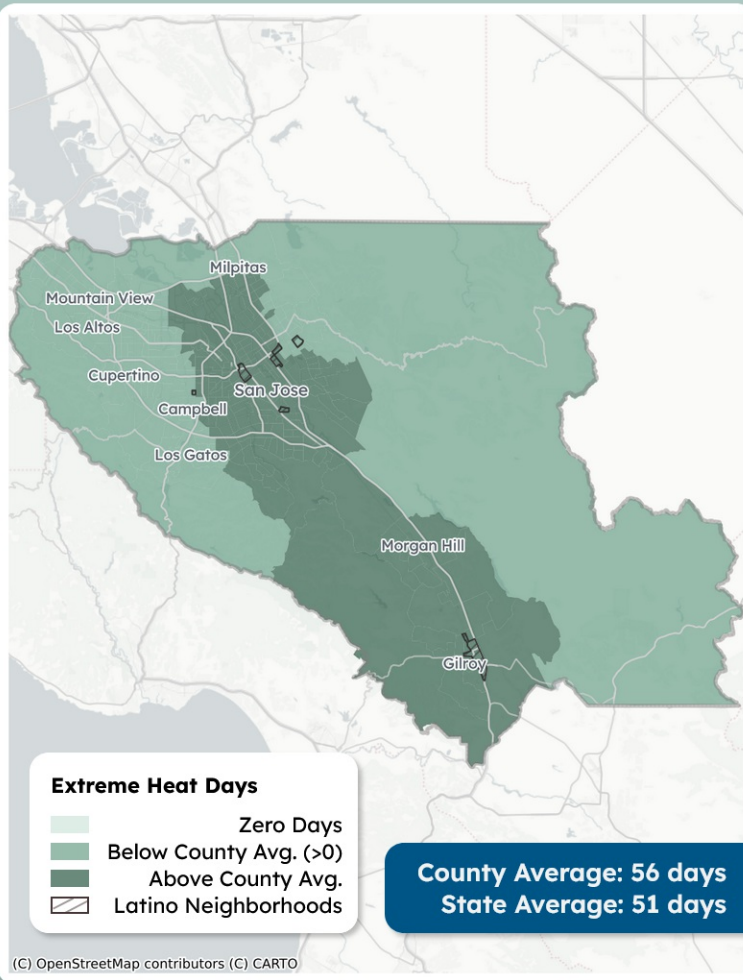
*NL white = Non-Latino white



Neighborhood Statistics

Extreme Heat Days

Latino Neighborhoods and Exposure to Extreme Heat Days ($\geq 90^{\circ}\text{F}$), 2018-2022



Latino neighborhoods = Census tracts with 70%+ Latino residents
 NL white neighborhoods = Census tracts with 70%+ NL white residents

!! Extreme heat days are defined as days where the temperature is at or above 90°F . Exposure to extreme heat poses significant health risks.

Annual Number of Extreme Heat Days (2018-2022)

At 90°F , the risk of heat-related illnesses and conditions increases significantly.

Latino neighborhoods	NL white neighborhoods
67 days	42 days
average days $\geq 90^{\circ}\text{F}$ annually	

Longest Period of Consecutive Extreme Heat Days (2022)

The Federal Emergency Management Agency defines a period of extreme heat in most of the U.S. as a period of 2 to 3 days above 90°F .

Latino neighborhoods	NL white neighborhoods
11 days	11 days
consecutive days $\geq 90^{\circ}\text{F}$ annually	

Projected Number of Extreme Heat Days by Mid-Century (2035-2064)

Looking forward, Latino and NL white neighborhoods are projected to experience a similar number of extreme heat days.

Latino neighborhoods	NL white neighborhoods
49 days	48 days
expected days $\geq 90^{\circ}\text{F}$ annually	

Neighborhood Statistics (cont.)

Barriers and Facilitators To Preventing Heat Exposure

